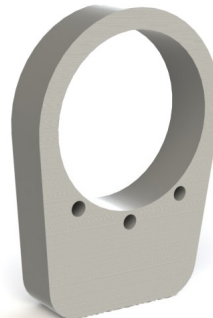


**UNSURPASSED PRECISION FOR THE PERFECT BARREL TO RECEIVER CONTACT**



**KEY DESIGN FEATURES**

- **UNPARALLELED PRECISION**  
Each recoil lug is precision table surface ground then put through a three point thickness inspection to verify a uniformity of  $\pm 0.0001$ " before leaving the factory.
- **ERGONOMICALLY DESIGNED**  
Tapered sides and rounded corners to prevent damage to bedding during installation and removal. Oversize 1.075" bore for trued actions that require larger diameter barrel threads.
- **HIGH STRENGTH CONSTRUCTION**  
Fully machined from a billet of 17-4 pre-hardened stainless steel and heat treated to 44-46 Rockwell C.
- **FEA OPTIMIZED DESIGN**  
Unique FEA optimized pocketed geometry on HP lug increases stiffness-to-weight ratio and reduces flex for a more uniform pressure on bedding material under heavy recoil.
- **MULTIPLE PINNING OPTIONS**  
Oversize and HP lugs feature 3 pin holes on back to allow for optional single or double pinning to receiver. Blind drilled for positive pin retention on the same radius pattern as the popular Holland Lugs.
- **STANDARD BORE AVAILABLE**  
Same precision ground accuracy and high strength construction without the pocket or pinholes. Features a standard 1.065" diameter bore.

**PRODUCT SPECIFICATIONS**

	STANDARD	OVERSIZE	HIGH PERFORMANCE
<b>Thickness</b>	1/4"	1/4"	5/16"
<b>Bore Size</b>	1.065"	1.075"	1.075"
<b>Pocket</b>	N/A	N/A	FEA Optimized
<b>Pin Holes</b>	N/A	Three 3/32" Holes .605" Radius Holland Pattern 2 pins included	
<b>Height</b>	1.800"	1.800"	1.800"
<b>Width</b>	1.313"	1.313"	1.313"
<b>Material</b>	17-4 PH Stainless Steel		
<b>Temper</b>	H900 Heat Treat, 44-46 RHC		
<b>Finish</b>	Oxide Blasted Wall, Surface Ground Face		
<b>MSRP</b>	\$38.99	\$41.99	\$42.99