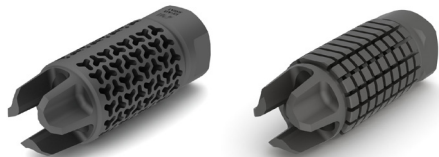




www.precisionarmament.com

Precision Armament
Wellsville, NY 14895
PH: 1-800-724-3802
FX: 1-585-593-5637

MADE USA
IN THE



AFAB/EFAB™ (Advanced/Enhanced Flash Arresting Brake) Installation Guide

IMPORTANT: READ INSTRUCTIONS COMPLETELY BEFORE INSTALLATION.

WARNING: MAKE SURE FIREARM IS UNLOADED BEFORE INSTALLATION. VISUALLY INSPECT CHAMBER, MAGAZINE, AND FIRING MECHANISM TO BE CERTAIN NO AMMUNITION IS IN THE FIREARM.

Model	Caliber	Barrel Thread	Accu-Washer System
AFAB-556	.223	1/2-28 TPI	AWS-500 (1/2-28)
EFAB-556	.223	1/2-28 TPI	AWS-500 (1/2-28)
AFAB-762	.308	5/8-24 TPI	AWS-625 (5/8-24)
EFAB-762	.308	5/8-24 TPI	AWS-625 (5/8-24)

INSTALLATION: First remove any existing muzzle device and/or shims or washers if necessary. These compensator's feature directionally vented gas ports to reduce muzzle climb and therefore must be properly 'aligned' (indexed) on the barrel to function properly. It is recommended to use the Precision Armament Accu-Washer™ Muzzle Alignment System for indexing. This will guarantee the most accurate bore alignment and provide the highest level of safety and performance. Refer to chart above for correct sizing.

Alternatively, a peel washer or other multi-shim system will provide adequate alignment for safe bullet clearance. It is NOT recommended to use a crush washer for timing as this can result in unacceptable misalignment.

Clean and degrease threads on the barrel and on the inside of the compensator prior to final installation. Depending on firing schedule, it is recommended to apply a high temperature (i.e. Loctite® 272) or ultra-high temperature (i.e. Flexbar® Rocksett) thread locking compound at final installation. Tighten to 20-30 ft-lbs of torque using wrench flats at base of compensator. Align compensator on rifle such that 3/32" pin hole is located at the 6 o'clock position.

IMPORTANT: After installation is completed, it is imperative to check the alignment of the compensator bore with the barrel bore to verify appropriate bullet clearance. This should be checked visually and with a snug fitting bore cleaning rod inserted through barrel and compensator to verify a bullet will not impact. **NOTE:** This compensator has a break-in period of approximately 20 rounds to remove internal burrs for optimal performance.

IMPORTANT: NEVER INSTALL THIS MUZZLE DEVICE ON A FIREARM THAT HAS A LARGER DIAMETER CALIBER THAN THE MUZZLE DEVICE IS DESIGNED FOR. THIS CAN ONLY BE DONE IF THE BORE IS ENLARGED TO ACCOMMODATE THE LARGER CALIBER. THIS SHOULD ONLY BE PERFORMED BY A COMPETENT GUNSMITH. RECOMMENDED MINIMUM BORE CLEARANCE IS 0.030" OVER BULLET DIAMETER.

CAUTION: This device operates by redirecting high-pressure gases at the muzzle. As a result, debris can be propelled back towards the shooter or nearby observers. ALWAYS WEAR EYE AND EAR PROTECTION WHEN SHOOTING OR OBSERVING.

Copyright © 2014 Precision Armament, DOC-A011

www.precisionarmament.com

Precision Armament
Wellsville, NY 14895

PH: 1-800-724-3802
FX: 1-585-593-5637