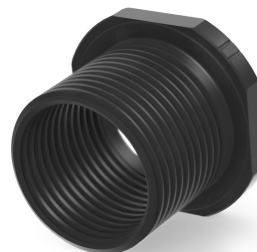


## PRECISION ATTACHMENT OF ALIGNMENT CRITICAL DEVICES

### KEY DESIGN FEATURES

- **PERFECT ALIGNMENT**  
Internal and external threads are single point cut in same operation to tight Class-III tolerances for guaranteed concentricity and alignment. Ideal for adapting alignment critical devices such as suppressors and brakes.
- **EASY INSTALLATION & REMOVAL**  
Wrench flats on back make for simple and easy installation and removal for use on multiple devices.
- **COMPACT DESIGN**  
Shoulder moves muzzle device only 0.100" forward maintaining full thread joint strength.
- **HIGH STRENGTH**  
Precision CNC machined from a pre-hardened HTSR 400 series stainless steel billet for superior heat and corrosion resistance
- **SUPERIOR DURABILITY**  
Available in an advance PVD (Physical Vapor Deposition) matte black finish, offering exceptional durability and corrosion resistance at high temperatures, making it ideal for full-auto fire as well as suppressor applications (also available in natural matte stainless finish).
- **NUMEROUS APPLICATIONS**  
Ideal for attachment of 5/8-24 threaded muzzle brakes, sound suppressors, or flash hidiers to smaller 1/2-28 and 9/16-24 threaded barrels.
- **SHOULDERLESS MODEL AVAILABLE (below)**  
Allows adapter to remain fully concealed under muzzle device for a continuous, streamlined look, and maintains 100% thread joint strength. Available in natural matte finish only.



### PRODUCT SPECIFICATIONS

|                         | STANDARD M4                             | SHOULDERLESS                        |
|-------------------------|---|-------------------------------------|
| <b>External Thread</b>  | 5/8x24 RH                               | 5/8x24 RH                           |
| <b>Internal Threads</b> | 1/2x28 RH<br>9/16x24 RH                 | 1/2x28 RH<br>1/2x32 RH<br>1/2x36 RH |
| <b>Length</b>           | 0.625"                                  | 0.625"                              |
| <b>O.D.</b>             | 0.825"                                  | 0.625"                              |
| <b>Flats</b>            | 0.750"                                  | N/A                                 |
| <b>Weight</b>           | 0.24 oz.                                | 0.2 oz.                             |
| <b>Material</b>         | HTSR 416 Stainless Steel Bar, HRC 26-32 |                                     |
| <b>Finish</b>           | PVD Matte Black or Matte Stainless      |                                     |
| <b>MSRP</b>             | \$22.99-\$29.99                         | \$17.99                             |

