



**PRECISION**  
ARMAMENT







## **OUR COMPANY**

A modern CNC manufacturing facility based in Wellsville NY, Precision Armament specializes in high-end tactical firearm accessories including: muzzle devices/accessories, scope rails, control accessories, and bottom metal. Intended primarily for use on purpose-built tactical weapons as well as high performance competition and hunting rifles, our products are designed with an emphasis on rock solid reliability as well as accuracy, light-weight, and ergonomics. From the use of sophisticated FEA software to multi-axis machining of exotic materials, we utilize advanced technologies to continuously offer our customers the absolute best products available. Whether your life is on the line, or the hunt of a lifetime is at stake, you can depend on our products for unmatched and unfailing performance, and to assure this, every Precision Armament product is backed by a Full Lifetime Guarantee.

## **OUR MISSION**

Through innovative thinking combined with the latest computer aided engineering technology, state of the art manufacturing, and advanced materials and coatings, our mission is to develop ultra-performance tactical products that are competitively priced, to satisfy even the most demanding civilian, military, and law-enforcement users.

Precision Armament  
4110 Niles Hill Road  
Wellsville, NY 14895

PH: 585-593-4975 FX: 585-593-5637  
[sales@precisionarmament.com](mailto:sales@precisionarmament.com)

Visit us at [www.precisionarmament.com](http://www.precisionarmament.com)

**ENGINEERED TO BE THE ABSOLUTE BEST**

**KEY DESIGN FEATURES**

- **84% RECOIL REDUCTION\***  
Advanced Convergent-Divergent (CD) port geometry yields maximum gas dynamic efficiency allowing unprecedented recoil reduction while maintaining safe baffle angles and bore clearance.
- **SAFE BAFFLE ANGLES**  
Safe 35-degree impingement angles prevent dangerous splashback from reaching the shooter in the event of a baffle strike.
- **GENEROUS BORE CLEARANCE**  
The largest bore clearance in the industry improves forgiveness against misalignments providing maximum safety and accuracy.
- **LOW GAS BLOWBACK**  
Advanced CD port geometry produces a narrow exhaust plume precisely vectored to keep gases away from the shooter.
- **ZERO FLASH INCREASE**  
Will not increase or generate secondary flash, minimizing flash related blast effects common to other devices.
- **FULLY USER TUNABLE\*\***  
Piloted drill-out ports allow customized multi-directional gas biasing to maintain a rock solid sight picture that does not move when firing.
- **INTEGRATED UNIVERSAL TIMING NUT**  
Brake can be quickly installed or removed using a common adjustable wrench, or the included lightweight spanner tools, which can be conveniently carried in the field for quick suppressor changeover.
- **LIGHTWEIGHT & COMPACT**  
FEA optimized to provide a competition legal package that is lighter, smaller, and shorter than any other device in its class.



**PRODUCT SPECIFICATIONS**

Hypertap® Muzzle Brake	
Models	See Next Page
Bore Clearance	0.060"
Baffle Angle	35 Degrees
Material (Body)	400 Series Stainless Steel
Finish (Body)	Matte Black PVD or Matte Stainless
Material (Nut)	17-4 Heat Treated Stainless
Finish (Nut)	Matte Black Nitride or Matte Stainless
Included	Two Stainless Spanner Wrenches

**KEY ACCURACY FEATURES**

- **HYBRID BAFFLE DESIGN**  
An advanced continuous curvature baffle geometry efficiently diverts high pressure gas away from the bore axis, effectively combining flat baffle accuracy with angled baffle performance.
- **SYMMETRIC BORE APERTURE**  
Hybrid baffle geometry provides a fully axisymmetric bore aperture with minimum bore wall surface area, effectively minimizing projectile-baffle interaction and initial yaw angle for maximum BC and long range accuracy.
- **PRECISION BORE ALIGNMENT**  
All alignment features machined in same operation as bore for maximum straightness and concentricity. All threads held to tight class 3+ tolerances.
- **RUGGED SKELETONIZED CROWN**  
Skeletonized exit crown protects exit aperture against foreign debris and impact damage.
- **CLEANING FRIENDLY DESIGN**  
Open muzzle crown and fully exposed baffles help reduce carbon buildup and facilitate easy cleaning.

\*Measured on high precision recoil pendulum using .223 Rem, 55gr FMJ, 16" barrel.  
\*\*.450 caliber model comes factory pre-drilled to 70% maximum diameter.





Hypertap Slim Body					Hypertap Standard Body					
Caliber	.223/5.56mm	.264/6.5mm	.308/7.62mm	.355/9mm	.243/6mm	.264/6.5mm	.308/7.62mm	.338 Cal	.350 Cal	.450 Cal
Thread	1/2x28	5/8x24	1/2x28 9/16x24 5/8x24 15x1mm	1/2x28	3/4x24 5/8x24	3/4x24 5/8x24	5/8x24 3/4x24 18x1mm 18x1.5mm	5/8x24 3/4x24 18x1mm 18x1.5mm	5/8x24	5/8x24 5/8x32 11/16x24 3/4x24
Length w/ Nut	2.45"				2.94"					
Diameter	0.90"				1.09"					
Weight	2.7 oz. - 3.0 oz.				4.1 oz. - 4.9 oz.					
MSRP	\$179.99				\$189.99					



Hypertap Gunsmith Muzzle Brake		
	Slim Body	Standard Body
Allowable Thread Range	1/2" - 5/8"	1/2" - 3/4"
Maximum Caliber	.358/9mm	.500/12.7mm
Factory Thread Bore	.375"	.468"
Factory Through Bore	.282"	.282"
Maximum Through Bore	.418"	.560"
Length	2.45"	2.94"
Diameter	0.90"	1.09"
MSRP	\$179.99	\$189.99



**PURPOSE-BUILT FOR ULTRALIGHT RIFLES**

**KEY DESIGN FEATURES**

- **84% RECOIL REDUCTION\***  
Advanced Convergent-Divergent (CD) port geometry yields maximum gas dynamic efficiency allowing unprecedented recoil reduction while maintaining safe baffle angles and bore clearance.
- **SAFE BAFFLE ANGLES**  
Safe 35-degree impingement angles prevent dangerous splashback from reaching the shooter in the event of a baffle strike.
- **GENEROUS BORE CLEARANCE**  
The largest bore clearance in the industry improves forgiveness against misalignments providing maximum safety and accuracy.
- **LOW GAS BLOWBACK**  
Advanced CD port geometry produces a narrow exhaust plume precisely vectored to keep gases away from the shooter.
- **ZERO FLASH INCREASE**  
Will not increase or generate secondary flash, minimizing flash related blast effects common to other devices.
- **FULLY USER TUNABLE\*\***  
Piloted drill-out ports allow customized multi-directional gas biasing to maintain a rock solid sight picture that does not move when firing.
- **INTEGRATED UNIVERSAL TIMING NUT**  
Brake can be quickly installed or removed using a common adjustable wrench, or the included lightweight spanner tools, which can be conveniently carried in the field for quick suppressor changeover.
- **LIGHTWEIGHT & COMPACT**  
FEA optimized to provide a competition legal package that is lighter, smaller, and shorter than any other device in its class.



**PRODUCT SPECIFICATIONS**

Hypertap® Ti Muzzle Brake	
Bore Clearance	0.060"
Baffle Angle	35 Degrees
Material (Body)	Grade-5 Titanium
Finish (Body)	Matte Black DLC
Material (Nut)	17-4 Heat Treated Stainless
Finish (Nut)	Matte Black Nitride
Included	Two Stainless Spanner Wrenches

**KEY ACCURACY FEATURES**

- **HYBRID BAFFLE DESIGN**  
An advanced continuous curvature baffle geometry efficiently diverts high pressure gas away from the bore axis, effectively combining flat baffle accuracy with angled baffle performance.
- **SYMMETRIC BORE APERTURE**  
Hybrid baffle geometry provides a fully axisymmetric bore aperture with minimum bore wall surface area, effectively minimizing projectile-baffle interaction and initial yaw angle for maximum BC and long range accuracy.
- **PRECISION BORE ALIGNMENT**  
All alignment features machined in same operation as bore for maximum straightness and concentricity. All threads held to tight class 3+ tolerances.
- **RUGGED SKELETONIZED CROWN**  
Skeletonized exit crown protects exit aperture against foreign debris and impact damage.
- **CLEANING FRIENDLY DESIGN**  
Open muzzle crown and fully exposed baffles help reduce carbon buildup and facilitate easy cleaning.

\*Measured on high precision recoil pendulum using .223 Rem, 55gr FMJ, 16" barrel.  
\*\*.450 caliber model comes factory pre-drilled to 70% maximum diameter.





# AccuWasher® GEN 2 MUZZLE DEVICE ALIGNMENT SYSTEM

THE MOST PRECISE AND EASY TO USE ALIGNMENT SYSTEM ON THE MARKET

## KEY DESIGN FEATURES

AccuWasher® kit includes individually marked high precision shims of different thicknesses allowing 360 degree indexing in precise increments. Only one shim is required for each application.

### ➤ SHIM ADAPTERS

New AccuWasher® Shim Adapters can be used to expand compability and fitment to nearly all common barrel threads, including metric.

### ➤ PRECISION MACHINED

Each AccuWasher® shim is machined to a guaranteed thickness uniformity of  $\pm 0.0001$ " providing better muzzle device alignment than any other system on the market.

### ➤ NO TOLERANCE STACK-UPS

The single shim system eliminates tolerance stack-ups inherent with stacked-shim systems resulting in superior alignment and accuracy.

### ➤ CONTROLLED TORQUE

Precise indexing increments prevents the need for excessive installation torque which can cause muzzle distortion and adversely affect accuracy.

### ➤ SIMPLE TO USE

Each AccuWasher® shim is individually marked according to thickness, simply choose the correct size and install. No need for the time consuming hassle involved with peel washers and stacked-shim systems.

### ➤ MAXIMUM SAFETY

Ensures the lowest risk of baffle strikes for the highest level of safety on alignment critical devices such as sound suppressors and muzzle brakes.

### ➤ COST EFFECTIVE

One kit will index about nine muzzle devices on average. Inexpensive replenishment shims are available and can be purchased individually as needed.

### ➤ CORROSION RESISTANT

Machined from high strength 400 series stainless steel bar. Finished with an oxide blasted non-reflective surface for low visibility.

### ➤ CHAMFERED EDGE

Each AccuWasher® shim is chamfered on one side to allow clearance for barrels with radiused thread shoulders.



## PRODUCT SPECIFICATIONS

	AW500G2	AW625G2	AW750G2
I.D.	1/2"	5/8"	3/4"
O.D.	0.725"	0.825"	0.925"
Thickness	0.060"-0.094"	0.040"-0.080"	0.040" - 0.080"
Material	400 Series Stainless Steel		
Finish	Oxide Blasted, Matte Grey		
MSRP	\$24.99 - \$32.99		

MADE  
IN THE USA





# M4-72 SEVERE-DUTY® COMPENSATOR

MAXIMUM RECOIL REDUCTION IN A COMPACT, RUGGED DESIGN

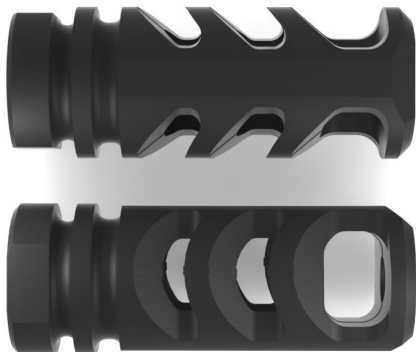
## KEY DESIGN FEATURES

- **INDUSTRY LEADING PERFORMANCE**  
Innovative reverse venting triple baffle design provides the highest level of recoil reduction and muzzle control on the market. Delivers over a 70% reduction in recoil energy for most cartridges\*.
- **EFFORTLESS MUZZLE CONTROL**  
Side vents are precisely canted upward to eliminate muzzle climb resulting in near zero muzzle movement while also minimizing dust signature when shooting prone.
- **COMPACT RUGGED DESIGN**  
FEA optimized for maximum durability and impact resistance in a compact, lightweight package.
- **SUPERIOR HEAT & CORROSION RESISTANCE**  
Precision machined from heat treated stainless with a high temperature lonbond® CrCN matte black finish for superior durability. The M4-72 can withstand the heat of combat conditions without being subject to rapid erosion. (also available in natural matte stainless).
- **PERFECT BORE ALIGNMENT**  
High tolerance class-III threads machined in same operation as bore aperture to guarantee perfect concentricity for optimum accuracy.



## PRODUCT SPECIFICATIONS

	M472-556	M472-762	M472-AK47
Caliber	.223/5.56mm	.308/7.62mm	7.62x39mm
Thread Size	1/2x28	5/8x24	14x1mm LH
AccuWasher®	A02119	A02219	2 Crush Springs Included
Length	2.250"	2.275"	2.275"
Diameter	0.865"	0.985"	0.945"
Weight	2.6 oz.	3.1 oz.	3.0 oz.
Material	HTSR 416 Stainless Steel Bar, HRC 26-32		
Finish	Black CrCN or Matte Stainless		Black CrCN
MSRP	\$89.99	\$99.99	\$99.99



AccuWasher® Muzzle Device Alignment System recommended for installation to achieve best performance (not included - not required for AK-47 brake).

\*Based on high precision ballistic pendulum test data.



## EXTREME LONG RANGE PRECISION - UNSURPASSED RECOIL REDUCTION

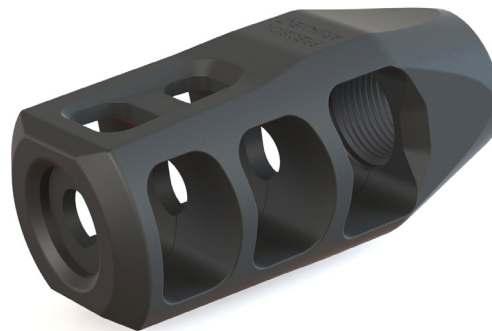
### KEY ACCURACY FEATURES

Features combine to minimize bullet flight disturbance resulting in improved accuracy and less yaw for higher ballistic coefficient.

- **FULLY SYMMETRICAL BLAST CHAMBER**  
Promotes balanced gas flow for reduced bullet yaw and maximum accuracy potential.
- **DIGRESSING BAFFLE THICKNESS**  
Stress optimized baffles diminish in thickness to minimize bore aperture wall surface and reduce baffle/projectile interaction.
- **PERFECT BORE ALIGNMENT**  
High tolerance class-III threads machined in same operation as bore aperture to guarantee perfect concentricity.
- **DEEPLY RECESSED EXIT HOLE CROWN**  
Protects exit hole from impact damage.

### ADDITIONAL DESIGN FEATURES

- **INDUSTRY LEADING RECOIL REDUCTION**  
Delivers recoil energy reduction of 70% or higher for many cartridges\*.
- **CLOSED BOTTOM DESIGN**  
Minimizes dust signature when shooting prone.
- **TOP VENTING GAS PORTS**  
Provides significant reduction in muzzle climb/jump.
- **ANGLED "V" SHAPED BLAST BAFFLES**  
Divert reflected blast above and below shooters ear for lower perceived concussion and noise.
- **FEA OPTIMIZED DESIGN**  
Finite element analyzed for optimum strength to weight ratio and impact survivability.
- **SUPERIOR HEAT & CORROSION RESISTANCE**  
Precision CNC machined from a heat treated stainless steel billet.
- **ULTRA WEAR RESISTANT**  
Available in a Ionbond® DLC (Diamond-Like Carbon) matte black finish (also available in natural matte stainless).



### PRODUCT SPECIFICATIONS

	M11-SPR	M11
Available Calibers	.223/5.56mm	.264/6.5mm .308/7.62mm .338/8.6mm
Thread Size	1/2x28	5/8x24
AccuWasher®	A02119	A02219
Length	2.225"	2.675"
Height	0.990"	1.188"
Width	1.125"	1.375"
Diameter at Barrel	0.750"	0.850"
Weight	3.3 oz.	5.6 oz.
Material	HTSR 416 Stainless Steel Bar, HRC 26-32	
Finish	Matte Black DLC or Matte Stainless	
MSRP	\$104.95	\$109.99-\$119.99

AccuWasher® Muzzle Device Alignment System recommended for installation to achieve best performance (not included).

\*Based on high precision ballistic pendulum test data.





# M41 SEVERE-DUTY® MUZZLE BRAKE

MAXIMUM LINEAR & TORSIONAL RECOIL REDUCTION FOR LONG RANGE RIFLES

## KEY ACCURACY FEATURES

Features combine to minimize bullet flight disturbance resulting in improved accuracy and less yaw for higher ballistic coefficient.

- **FULLY SYMMETRICAL STRUCTURE**  
Perfect axial symmetry of entire baffle stack allows completely symmetrical gas flow resulting in lowest possible bullet yaw and maximum accuracy potential.
- **MAXIMIZED VENTING AREA**  
Maximized venting area between baffles allows a greater volume of high pressure gas to be diverted away from the bullet path to further minimize flight disturbance.
- **DIGRESSING BAFFLE THICKNESS**  
Stress optimized baffles diminish in thickness to minimize bore aperture wall surface and reduce baffle/projectile interaction.
- **PERFECT BORE ALIGNMENT**  
High tolerance class-III threads machined in same operation as bore aperture to guarantee perfect concentricity.
- **DEEPLY RECESSED EXIT HOLE CROWN**  
Protects exit hole from impact damage.

## ADDITIONAL DESIGN FEATURES

- **INDUSTRY LEADING RECOIL REDUCTION**  
Delivers recoil energy reduction of 70% or higher for many cartridges\*.
- **TORSIONAL RECOIL REDUCTION**  
Helical "turbine" style ports redirect gas in a counter clockwise radial direction reducing the torsional recoil force associated with heavy bullets and fast right hand twist rates.
- **FEA OPTIMIZED DESIGN**  
Finite element analyzed for optimum strength to weight ratio and impact survivability.
- **SUPERIOR HEAT & CORROSION RESISTANCE**  
Precision CNC machined from a heat treated stainless steel billet
- **ULTRA WEAR RESISTANT**  
Available in a Ionbond® DLC (Diamond-Like Carbon) matte black finish (also available in natural matte stainless).
- **SIMPLE INSTALLATION**  
Does not require any special timing or alignment shims for installation. Wrench installation optional.



## PRODUCT SPECIFICATIONS

M41 Severe-Duty Muzzle Brake	
Available Calibers	.264/6.5mm
	.308/7.62mm
	.338/8.6mm
Thread Size	5/8x24
Length	2.750"
Diameter	1.312"
Diameter at Barrel	0.925"
Weight	5.3 oz.
Material	HTSR 416 Stainless Steel Bar, HRC 26-32
Finish	Matte Black DLC or Matte Stainless
MSRP	\$109.99-\$119.99

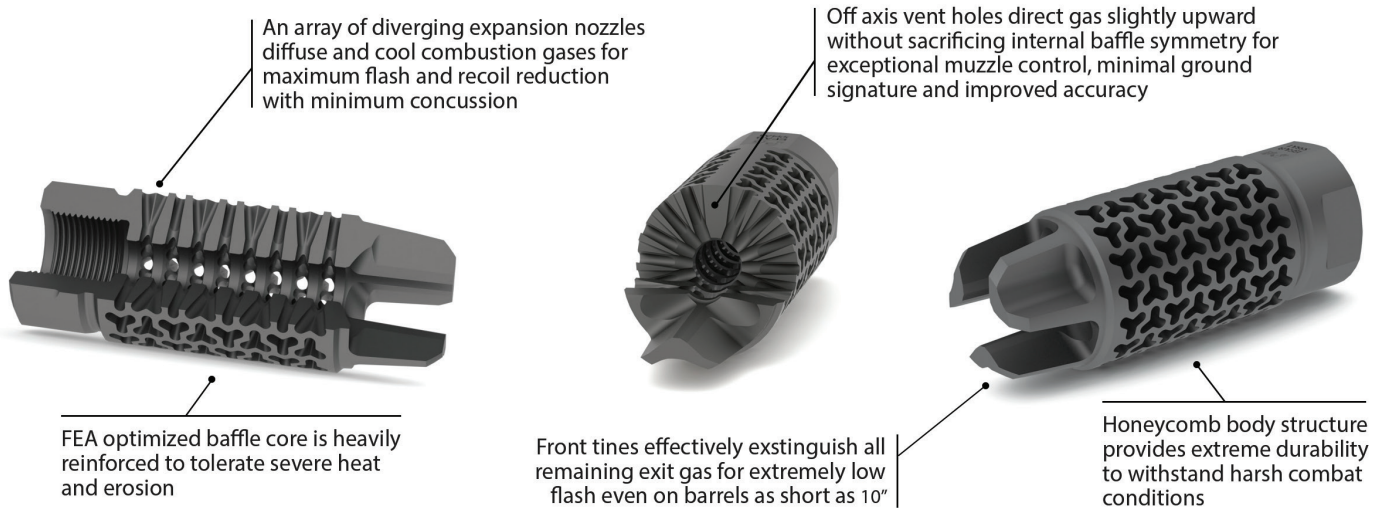


M41 Spanner Wrench is available for fast and easy installation and removal of brake to avoid damage or marring (not included).

\*Based on high precision ballistic pendulum test data.

MADE IN THE USA

**THE ULTIMATE BALANCE OF MUZZLE CONTROL, FLASH SUPPRESSION, & LOW CONCUSSION**



**KEY DESIGN FEATURES**

- **EFAB® PATENTED TECHNOLOGY**  
An innovative configuration of diverging expansion nozzles are used to both cool and diffuse combustion gases resulting in maximum recoil reduction\*, extremely low flash, and minimum concussion to the rear and sides of the shooter.
- **MAXIMUM FLASH SUPPRESSION**  
Features an array of proprietary three way expansion nozzles that are precisely oriented to maximize adiabatic expansion and cooling of combustion gases for highly effective flash suppression even on barrels as short as ten inches.
- **OFF-AXIS VENTING**  
Vent holes are CNC milled off-axis allowing gas to be directed slightly upward while preserving internal baffle symmetry for exceptional muzzle control, minimal ground signature and improved accuracy.
- **COMBAT DURABLE DESIGN**  
Heavy duty baffles and a continuously webbed core structure provide the durability to withstand heat and erosion associated with short barrels and full auto fire as well as the strength to accommodate powerful magnum cartridges.
- **ADDITIONAL FEATURES**  
Pre-drilled for permanent pinning to bring 14.5" barrels to legal length. Closed bottom design for reduced dust signature when shooting prone.

**PRODUCT SPECIFICATIONS**

	EFAB-556	EFAB-762
<b>Caliber</b>	.223/5.56mm	.308/7.62mm
<b>Thread Size</b>	1/2x28	5/8x24
<b>Length</b>	2.5"	2.75"
<b>Diameter</b>	0.900"	0.985"
<b>Weight</b>	3.5 oz.	4.25 oz.
<b>Material</b>	HTSR 416 Stainless Steel Bar, HRC 26-32	
<b>Finish</b>	Matte Black Ionbond® CrCN	
<b>MSRP</b>	\$159.95	\$169.95

AccuWasher® Muzzle Device Alignment System recommended for installation to achieve best performance (not included).

\* 56% recoil energy reduction (ballistic pendulum test, .223 Rem, 16" BBL, 55gn FMJ)

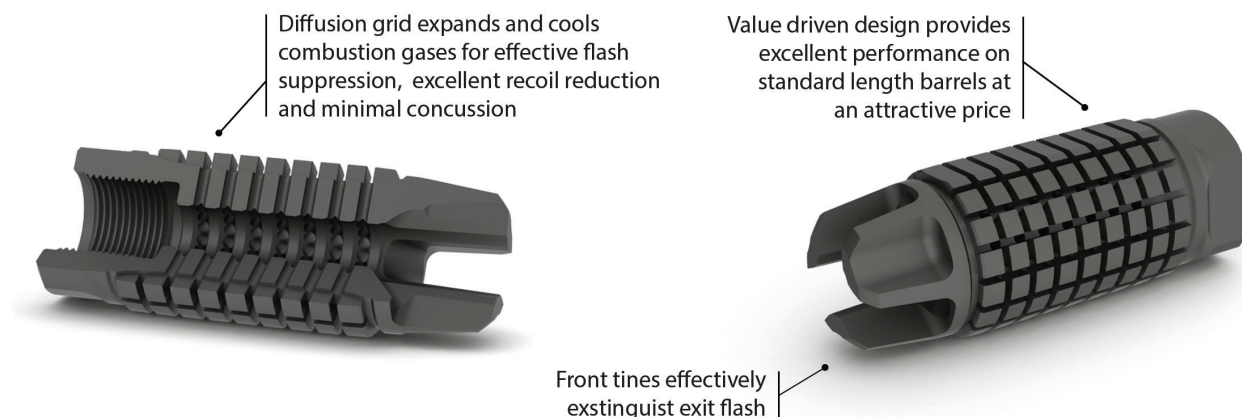




# AFAB® HYBRID MUZZLE BRAKE

(ADVANCED FLASH ARRESTING BRAKE)

THE BEST VALUE OF MUZZLE CONTROL, FLASH SUPPRESSION, & LOW CONCUSSION



## KEY DESIGN FEATURES

### ➤ SUPERIOR VALUE

Value driven design that incorporates EFAB® design concepts with improved manufacturability to provide excellent performance on standard length barrels at a much lower price point. Provides recoil reduction\* and flash suppression performance within 5-10% of the EFAB® on 16"+ barrel lengths at two thirds the price.

### ➤ AFAB® PATENTED TECHNOLOGY

A deep exterior diffusion grid allows combustion gases to both cool and diffuse resulting in effective flash suppression, excellent recoil reduction, and minimum concussion to the rear and sides of the shooter.

### ➤ OFF-AXIS VENTING

Vent holes are CNC milled off-axis allowing gas to be directed slightly upward while preserving internal baffle symmetry for exceptional muzzle control, minimal ground signature and improved accuracy.

### ➤ ADDITIONAL FEATURES

Pre-drilled for permanent pinning to bring 14.5" barrels to legal length. Closed bottom design for reduced dust signature when shooting prone.

## PRODUCT SPECIFICATIONS

	AFAB-556
Caliber	.223/5.56mm
Thread Size	1/2x28
Length	2.225"
Diameter	0.865"
Weight	3.0 oz.
Material	HTSR 416 Stainless Steel Bar, HRC 26-32
Finish	Matte Black Ionbond® CrCN
MSRP	\$109.95

AccuWasher® Muzzle Device Alignment System recommended for installation to achieve best performance (not included).

\* 50% recoil energy reduction (ballistic pendulum test, .223 Rem, 16" BBL, 55gn FMJ)



# OPEN SOURCE<sup>®</sup> CERTIFIED PRECISION<sup>™</sup> DIRECT THREAD SUPPRESSOR MOUNT

FOR DEMANDING APPLICATIONS WHERE PRECISION, DURABILITY AND WEIGHT ARE PARAMOUNT

## KEY DESIGN FEATURES

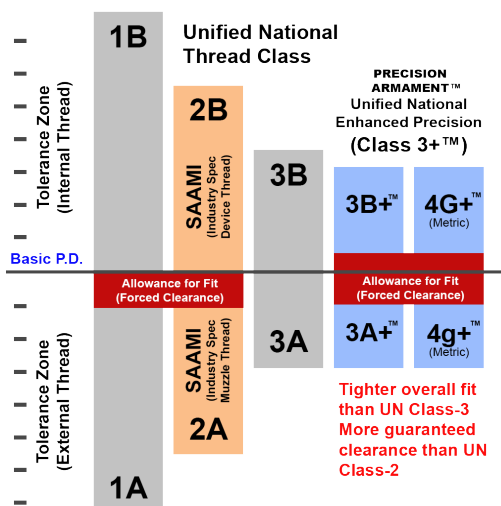
- **UNIVERSAL COMPATIBILITY**  
Fits all 1.375x24/HUB interface suppressors.
- **ENHANCED CLASS 3+<sup>™</sup> THREADS**  
Our proprietary thread class provides a higher precision fit than the tightest UN Class-3 threads for superior suppressor alignment, yet also guarantees a level of thread clearance greater than UN Class-2 (SAAMI) threads for improved reliability.
- **CERTIFIED PRECISION<sup>™</sup>**  
Alignment tolerances are up to 5x better than industry standards.
- **BACKWARDS COMPATIBLE**  
Class 3+<sup>™</sup> threads are fully compatible with existing Class-2 and Class-3 threads and guarantee a higher precision fit with lower risk of interference when mated with them.
- **FEA OPTIMIZED**  
Finite Element Analyzed for optimum strength-to-weight ratio and impact survivability.
- **ADDITIONAL FEATURES**  
Compatible with industry standard HUB spanner wrenches.



## PRODUCT SPECIFICATIONS

Thread Sizes	1/2x28 5/8x24 9/16x24 11/16x24 3/4x24
Interface (Suppressor Side)	HUB/UN 1.375x24 Class 3+
Interface (Gun Side)	UN Class 3+ <sup>™</sup>
Certified Delta Perpendicularity	=<0.0001"
Certified Delta Runout	=<0.0003"
Material	17-4 Stainless Steel
Weight	1.9oz
Diameter	1.56"
Finish	Matte Stainless, Black Nitride
MSRP	\$89.95

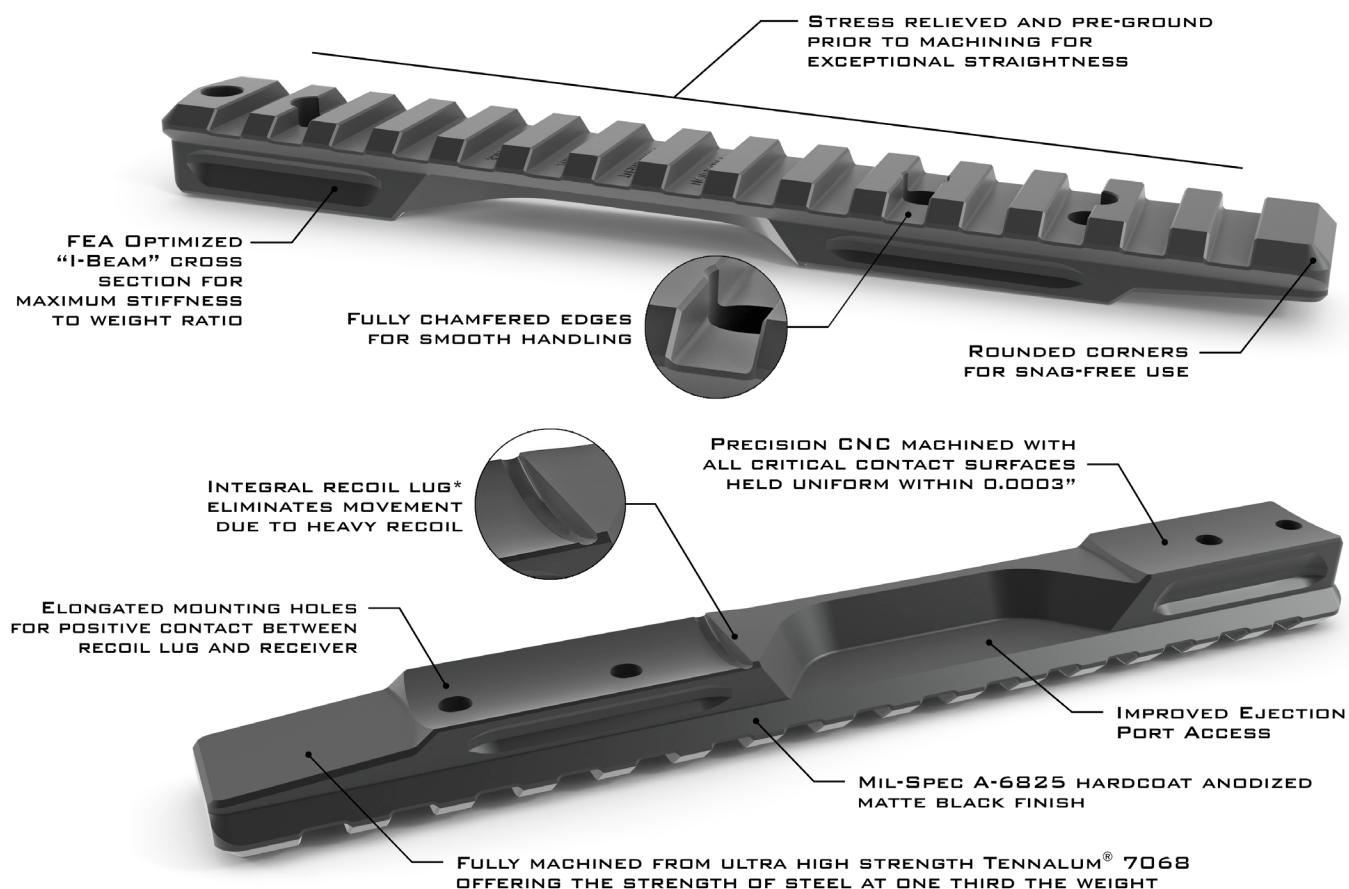
## The Class 3+<sup>™</sup> Advantage



MADE IN THE USA



## FULL FEATURE RAIL WITH STEEL SURPASSING STRENGTH AT ONE THIRD THE WEIGHT



### PRODUCT SPECIFICATIONS

	REMINGTON			SAVAGE (ACCU-TRIGGER)		WINCHESTER		FNH
Model	700	700	870/1100/11-87	10 + Variant	110 + Variant	70	70	SPR/TSR/PBR
Action	Short	Long	Shotgun	Short	Long	Short	Long	N/A
Length	6.450"	6.885"	5.500"	6.625"	6.975"	6.375"	6.885"	6.375"
No. of Slots	15	16	13	15	16	15	16	15
Weight	2.3 oz.	2.4 oz.	1.5 oz.	2.3 oz.	2.4 oz.	2.3 oz.	2.4 oz.	2.2 oz.
MOA	20	20	0	20	20	20	20	20
Hardware	4 x 6-48 or 6 x 8-40 torx	4 x 6-48 or 6 x 8-40 torx	6 x 6-48 torx	4 x 6-48 torx	4 x 6-48 torx	4 x 6-48 torx	4 x 6-48 torx	6 x 8-40 torx
Material	Tennalum® 7068-T6511 Aluminum (99 KSI yield strength)							
Finish	MIL-SPEC A-8625 Hardcoat Anodized Matte Black							
MSRP	\$119.99	\$119.99	\$79.99	\$109.98	\$109.98	\$119.99	\$119.99	\$119.99

\*Integral Recoil Lug is not available on Savage models

## SURE-GRIP™ MACHINE CUT TEXTURING FOR FAST, RELIABLE CYCLING



### KEY DESIGN FEATURES

- **SURE-GRIP™ CNC ENGRAVED TEXTURING**  
Provides a dependable non-slip surface for fast reliable cycling without being sharp or abrasive like knurling.
- **OVERSIZE KNOB**  
Standard 5/16-24 thread for use on Remington 700 and similar size bolt handles.
- **MINI SIZE KNOB**  
Available in 5/16-24, and in 1/4-28 threads with a reduced overall size to blend better on smaller diameter bolt handles such as the Winchester 70 and Savage 110 rifles.
- **HIGH STRENGTH**  
Machined from light-weight high strength 7075-T6 aircraft grade aluminum providing superior strength over industry standard 6061 aluminum.
- **EXTENDED DURABILITY**  
Features a MIL-A-8625 hardcoat anodized matte black finish for increased wear resistance and durability.

### PRODUCT SPECIFICATIONS

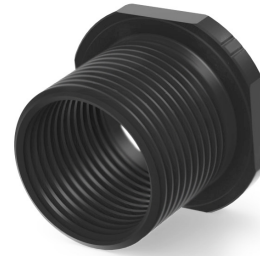
	OVERSIZE	MINI
Thread Size	5/16x24	5/16x24 1/4x28
Length	1.6"	1.35"
O.D.	0.975"	0.875"
O.D. at Thread	0.410"	0.410"/0.335"
Weight	1.2 oz.	0.9 oz.
Material	7075-T6 Aluminum	
Finish	MIL-SPEC A-8625 Hardcoat Anodized Matte Black	
MSRP	\$34.95	\$34.95



## PRECISION ATTACHMENT OF ALIGNMENT CRITICAL DEVICES

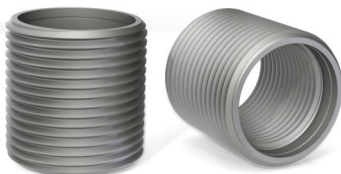
### KEY DESIGN FEATURES

- **PERFECT ALIGNMENT**  
Internal and external threads are single point cut in same operation to tight Class-III tolerances for guaranteed concentricity and alignment. Ideal for adapting alignment critical devices such as suppressors and brakes.
- **EASY INSTALLATION & REMOVAL**  
Wrench flats on back make for simple and easy installation and removal for use on multiple devices.
- **COMPACT DESIGN**  
Shoulder moves muzzle device only 0.100" forward maintaining full thread joint strength.
- **HIGH STRENGTH**  
Precision CNC machined from a pre-hardened HTSR 400 series stainless steel billet for superior heat and corrosion resistance
- **SUPERIOR DURABILITY**  
Available in an advance PVD (Physical Vapor Deposition) matte black finish, offering exceptional durability and corrosion resistance at high temperatures, making it ideal for full-auto fire as well as suppressor applications (also available in natural matte stainless finish).
- **NUMEROUS APPLICATIONS**  
Ideal for attachment of 5/8-24 threaded muzzle brakes, sound suppressors, or flash hiders to smaller 1/2-28 and 9/16-24 threaded barrels.
- **SHOULDERLESS MODEL AVAILABLE (below)**  
Allows adapter to remain fully concealed under muzzle device for a continuous, streamlined look, and maintains 100% thread joint strength. Available in natural matte finish only.

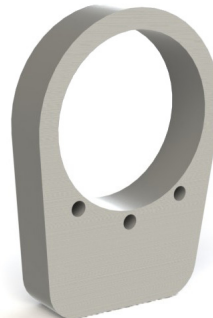


### PRODUCT SPECIFICATIONS

	STANDARD M4	SHOULDERLESS
External Thread	5/8x24 RH	5/8x24 RH
Internal Threads	1/2x28 RH 9/16x24 RH	1/2x28 RH 1/2x32 RH 1/2x36 RH
Length	0.625"	0.625"
O.D.	0.825"	0.625"
Flats	0.750"	N/A
Weight	0.24 oz.	0.2 oz.
Material	HTSR 416 Stainless Steel Bar, HRC 26-32	
Finish	PVD Matte Black or Matte Stainless	
MSRP	\$22.99-\$29.99	\$17.99



**UNSURPASSED PRECISION FOR THE PERFECT BARREL TO RECEIVER CONTACT**



**KEY DESIGN FEATURES**

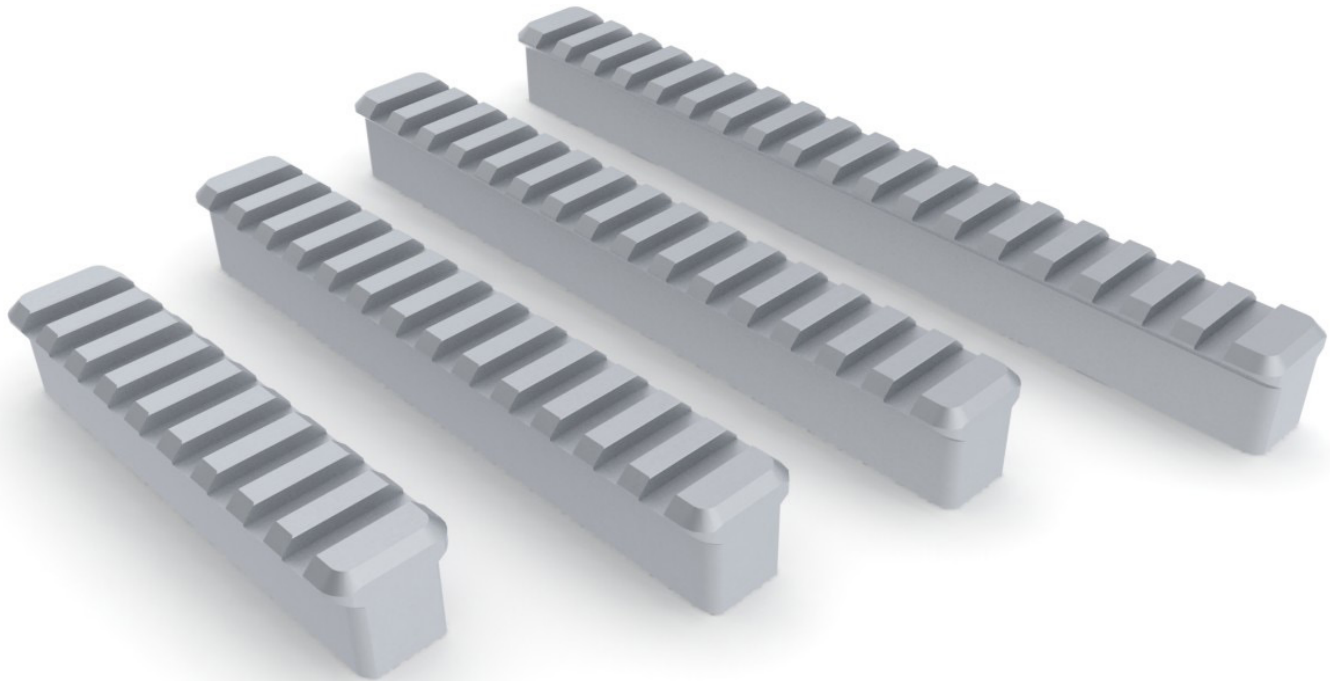
- **UNPARALLELED PRECISION**  
Each recoil lug is precision table surface ground then put through a three point thickness inspection to verify a uniformity of  $\pm 0.0001$ " before leaving the factory.
- **ERGONOMICALLY DESIGNED**  
Tapered sides and rounded corners to prevent damage to bedding during installation and removal. Oversize 1.075" bore available for trued actions that require larger diameter barrel threads.
- **HIGH STRENGTH CONSTRUCTION**  
Fully machined from a billet of 17-4 pre-hardened stainless steel and heat treated to 44-46 Rockwell C.
- **FEA OPTIMIZED DESIGN**  
Unique FEA optimized pocketed geometry on HP lug increases stiffness-to-weight ratio and reduces flex for a more uniform pressure on bedding material under heavy recoil.
- **MULTIPLE PINNING OPTIONS**  
Oversize and HP lugs feature 3 pin holes on back to allow for optional single or double pinning to receiver. Blind drilled for positive pin retention on the same radius pattern as the popular Holland lug.
- **STANDARD BORE AVAILABLE**  
Same precision ground accuracy and high strength construction without the pocket or pinholes. Features a standard 1.065" diameter bore.

**PRODUCT SPECIFICATIONS**

	STANDARD	OVERSIZE	HIGH PERFORMANCE
Thickness	1/4"	1/4"	5/16"
Bore Size	1.065"	1.075"	1.075"
Pocket	N/A	N/A	FEA Optimized
Pin Holes	N/A	Three 3/32" Holes .605" Radius Holland Pattern 2 pins included	
Height	1.800"	1.800"	1.800"
Width	1.313"	1.313"	1.313"
Material	17-4 PH Stainless Steel		
Temper	H900 Heat Treat, 44-46 RHC		
Finish	Oxide Blasted Wall, Surface Ground Face		
MSRP	\$38.99	\$41.99	\$42.99



**THE HIGHEST QUALITY RAIL BLANKS ON THE MARKET**



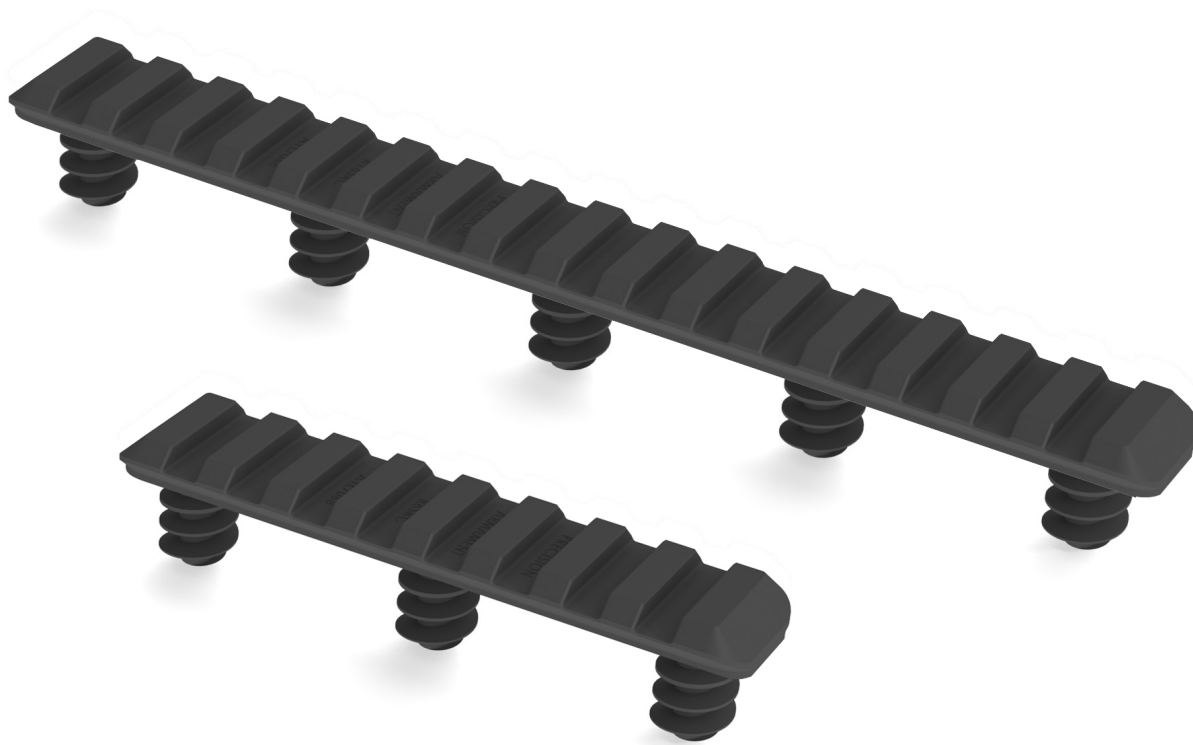
**KEY DESIGN FEATURES**

- **IDEAL FOR CUSTOM APPLICATIONS**  
A high quality, versatile solution for custom fitting optics and accessories to receivers, barrels, & stocks. Base material is 9/16" high to accommodate a wide range of heights and cants.
- **PRECISION CNC MACHINED**  
Fully machined to exact MIL-STD 1913 dimensions to the same tight tolerances as our bolt action rails providing superb quality over extruded blanks.
- **PRE-FINISHED DESIGN**  
Includes full cross slots and pre-radiused ends for a professional fit and finish that will not snag on gear.
- **HIGH STRENGTH CONSTRUCTION**  
Made from aircraft grade 7075-T6 aluminum providing superior strength over 6061 blanks.

**PRODUCT SPECIFICATIONS**

	A11001	A11002	A11003	A11004
<b>Length</b>	4.0"	5.563"	6.375"	7.625"
<b>No. of Slots</b>	9	13	15	18
<b>Base Height</b>	9/16" to Bottom of Dovetail			
<b>Base Width</b>	0.617"			
<b>Material</b>	7075 T6 Aluminum Billet			
<b>Finish</b>	Glass Bead Blasted, Satin Finish			
<b>MSRP</b>	\$44.99	\$54.99	\$59.99	\$64.98

**A PERMANENT, SIMPLE, & ROCK-SOLID ATTACHMENT PLATFORM**



**KEY DESIGN FEATURES**

- **VERSATILE CUSTOMIZATION**  
Aggressive spiral cut studs on underside of rail are designed to epoxy into any position on a rifle stock offering an extremely strong platform for mounting bipods, lights, lasers, optics, and more.
- **PRECISION CNC MACHINED**  
Fully machined to exact MIL-STD 1913 dimensions to the same tight tolerances as our bolt action rails providing superb quality.
- **SMOOTH HANDLING DESIGN**  
Fully CNC chamfered edges, rounded corners, and a low profile design enhances sleekness and handling for snag-free function.
- **HIGH STRENGTH, LIGHT WEIGHT**  
Made from ultra-strength 7068-T6 aluminum providing the strength of steel at one third the weight.

**PRODUCT SPECIFICATIONS**

	SRC-8	SRC-16
Length	3.7"	6.84"
No. of Slots	8	16
Rail Height	0.275"	0.275"
Stud Length/O.D.	9/16" - 0.480"	9/16" - 0.480"
Stud Spacing	1-1/2"	1-1/2"
Weight	1.2 oz.	2.2 oz.
Material	7068-T6 Aluminum	
Finish	Hardcoat Anodized Matte Black	
MSRP	\$59.99	\$79.99